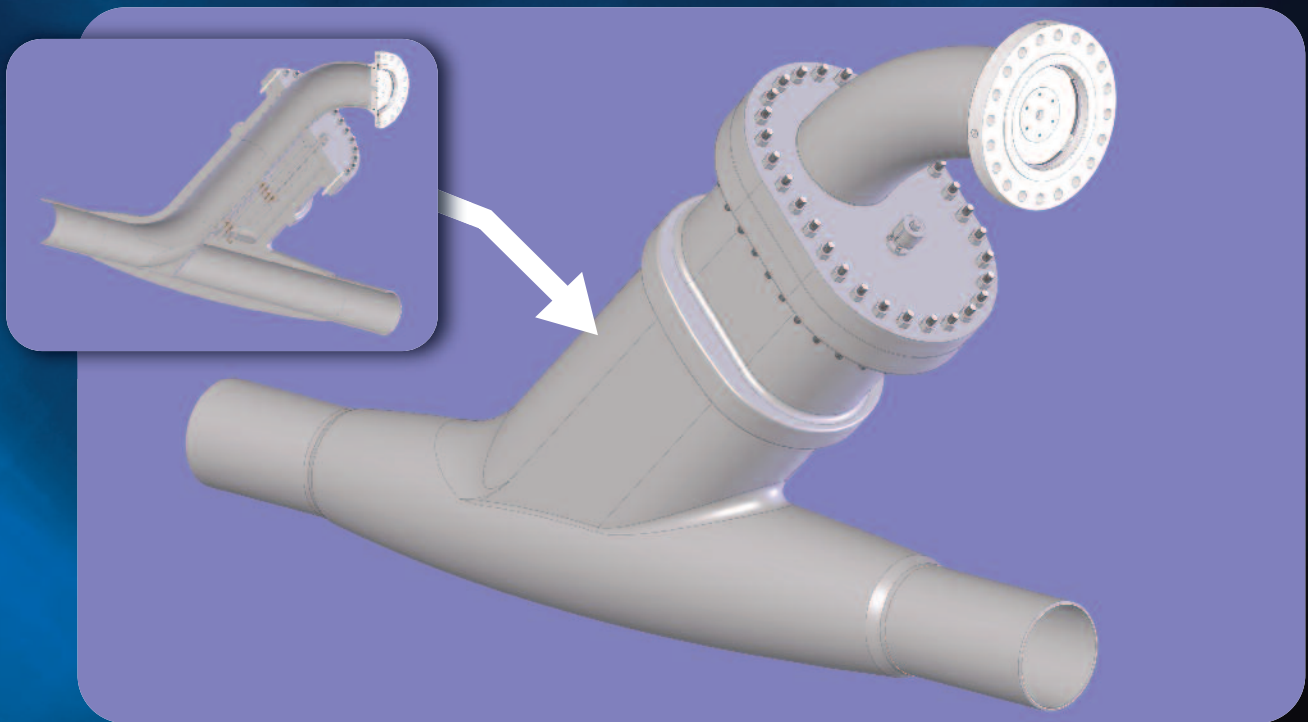


Pipeline Pigging Wye

Innovative Solution for Launching and Retrieving Pigs



Features:

- Design Pressure of 1480 psig @ 100° F
- Design Factor – Class 3 (.5)
- Rated ANSI 600
- Fabricated with 3D bends to accept ALL PIGS (Cleaning – Smart Pigs)
- Designed to Customers' Specifications
- Cast Body Design
- Available from 4" to 26" Line Size

Benefits:

- Temporary Launching and Receiving Station
- Designed for limited footprint in High Consequence Areas (HCA)
- Multiple Installation Methods.
- Reduced Right-a-Way Foot Print due to removal of launch and receive hardware
- Reduced Installation Costs and little to no Maintenance Costs



Launch/Receive WYE Fittings

The right people, technology and experience to keep your pipelines and plants online.



Valve Repair Services



Field Machining Services



Emissions Control Services



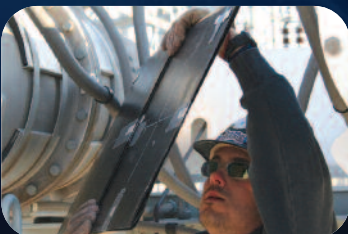
Hot Tap Services



Leak Repair Services



Technical Bolting



NDT and Inspections



Pipe Repair Services



Mobile Heat Treating

800-662-8326

www.teamindustrialservices.com